



3,5 t

4,0 t

5,0 t

Machines. Ideas. Solutions.  
For maximum maneuverability and energy efficiency.

## ELECTRIC FORKLIFTS

**RECORD ER**



RATED CAPACITY  
3500-5000 kg

LOAD CENTER  
500-600 mm

LIFTING HEIGHT  
3000-6400 mm



## THE BEST ELECTRIC FORKLIFTS FOR EVERY JOB ...

# ERGONOMIC DESIGN THAT PROVIDES COMFORT

The electric forklifts produced by "Balkancar Record" JSC are designed in compliance with ergonomic considerations for work with less fatigue and meet all modern European safety regulations and environmental standards.

The machines have an easily adjustable steering column, allowing the driver to choose the most comfortable position, guaranteeing reduced fatigue in long hours of work.

The wide and flat floor and the low-lying, ergonomic pedals create comfort and increase the efficiency of the driver.

The step is comfortable, non-slip and makes the getting in and getting off the machine safe and easy.

A handle for convenience and security is also installed.



### Ergonomic, adjustable seat

- Wide seating area;
- Position adjustment on the seat;
- Safety belt;
- Comfortable armrests;
- Change the slope of the backrest;
- Seat cushion adjustment.

### Movement, management and control

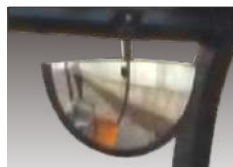
- Silent operation with AC traction and pump motors;
- Movement regulation;
- Smooth lifting and lowering of the load;
- Minimum energy consumption;
- Possibility for shifting the mode of the operation;
- Control of the modes;
- Battery status and working hours display;
- Quick and easy diagnostics of all systems;
- Adjustment of operating parameters depending on customer's needs;
- Multifunctional display;
- Service device / calibrator / for performing diagnostics and control.

### Electric lighting, signalization, safety

- Designed for driving and working in unlit and closed premises;
- Audible alarm for reversing;
- Signal lamp - BLUE SPOT when reversing;
- Rotating warning light;
- Safety is ensured with a system that does not allow unpredictable driving without the driver sitting down at his seat.

### Overview when maneuvering backwards

The panoramic mirror allows a wide angle of vision and ensures safety at work.



# Comfort & Safety

## Great visibility

The lifting equipment is constructed in a way that ensures great visibility while moving forwards and the top of the forks is always visible from the driver's seat. The size and arrangement of the dashboard and the placement of the controls on it is optimized.



## Safe maneuvering when moving backwards

The counterweight is designed to improve visibility when moving backwards. The muffler is vertically positioned and with the correct orientation, which prevents hot air from blowing on operator while reversing. This improves driver comfort and prevents burns caused of exhaust gases.



# COMFORT & SAFETY



## Service maintenance

- The wide opening hood above the electronics ensures easy maintenance;
- 1000 hours between two consecutive technical maintenances;
- The used display gives the driver information for the upcoming technical maintenance;
- The the electric equipment is provided with diagnostic computer port;
- The combination of easy access and quality parts and components reduces maintenance time and increases productivity and reliability.

### ECOLOGICAL COMPACT AND SILENT MAINTENANCE-FREE

#### Construction

The construction is characterized by strength, reliability, maneuverability and easy maintenance. Modern electric forklift equipped with the latest electronic technology and has the ability to manipulate various type of loads.

#### Braking system

Reliable braking is ensured with minimal effort, safely and ergonomically.

The electric forklift has two independent braking systems:

1. Service hydraulic brakes on the front wheels.
2. Mechanical parking brake.

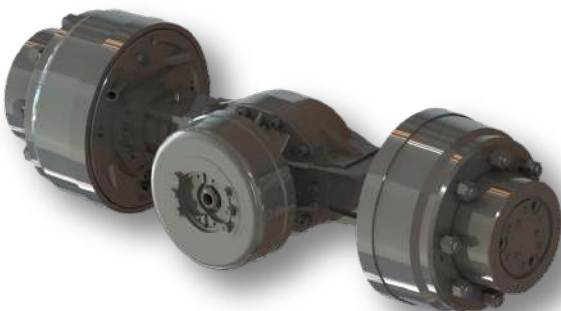
# ELECTRIC MOTORS

#### Transmission

The produced electric forklifts have one alternating current or a DC motor mounted on the drive axle. For the larger capacities forklifts additionally is incorporated a power reducer to improve the traction characteristics. The smooth, energy efficient and almost silent movement of the machine is ensured.



The transmission is designed for hard work and provides high performance. There are two versions with drum brakes and wet disc brakes.



#### Batteries

The main source of energy of the electric platforms are the lead-acid, gel and lithium-ion traction rechargeable batteries. Lithium-ion batteries are being used more and more every day.

Their advantages are:

- reduced losses and production risks;
- accelerated charging time;
- easy operation;
- energy savings up to 30%;
- safety and environmental protection
- lack of harmful fumes and toxic waste.

#### Advantages of AC technology

High frequency electronic control guarantees trouble-free operation and allows for recovery of energy restoring part of the capacity of battery during operation.

This is done in the following cases:

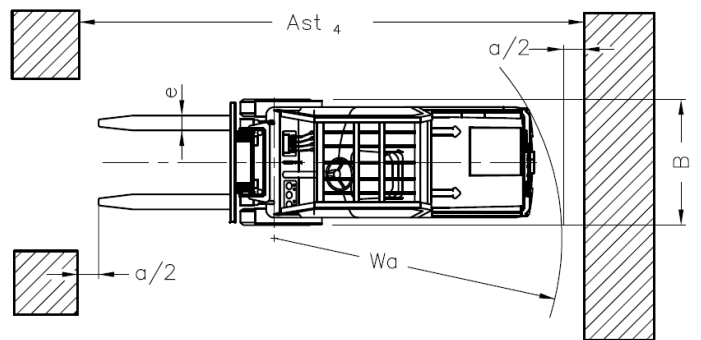
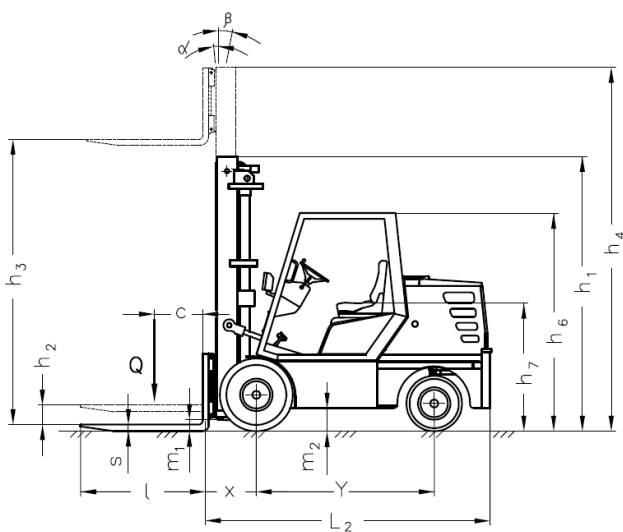
- When releasing the accelerator pedal;
- When descending a slope;
- When the brake pedal is pressed.

#### Controller

- Extremely energy efficient digital controller;
- Smooth, precise movement and lifting control;
- Programmable parameters for movement for the traction AC motor.



ELECTRIC FORKLIFT		SPECIFICATION				
1	Manufacturer	BALKANCAR RECORD JSC				
2	Type			ER 35	ER 40	ER 50
3	Load capacity	Q	kg	3500	4000	5000
4	Load center	C	Manufacturer	mm	500	
5	Drive unit		Type		Battery	
6	Type of operation		Load capacity		Rider seated	
7	Overall dimensions	$h_3$	Lift height	mm	3000 <sup>1)</sup>	
8		$L_2$	Length	mm	2900	3210
9		B	Width	mm	1200	1300
10		$h_6$	Height of overhead guard	mm	2220	2260
11	Battery		Type		Panzer	
12			Voltage/rated capacity (after 5 hour of work)	V/Ah	80/400	80/440
13	Electric motors		Drive motor performance at $S_2 - 60$ min	kW	12	
14			Lift motor performance at $S_4 - 25\%$	kW	16,8	



1) For other lift heights refer to MAST table.  
 Size  $h_4$  does not include a load backrest. When a backrest is fitted add + 680 mm.

1. Electric forklifts in accordance with БДС ISO 3691-1.
2. Other variants of specifications, characteristics and batteries are possible.
3. Dimensions and parameters as shown are for reference only. They have been obtained under laboratory testing conditions. They could vary in accordance with the operation mode and the corresponding variants.
4. Balkancar Rekord JSC reserves the right to introduce changes to the specifications and products without notice.

<b>MAST</b>				
<b>TYPE</b>	<b>LIFT HEIGHT</b> <b>h<sub>3</sub></b>	<b>HEIGHT, MAST LOWERED</b> <b>h<sub>1</sub></b>	<b>HEIGHT, MAST EXTENDED</b> <b>h<sub>4</sub></b>	<b>FREE LIFT</b> <b>h<sub>2</sub>/h<sub>5</sub></b>

**SIMPLEX – 3,5/4,0 t ELECTRIC FORKLIFT (Two masts, Free lift)**

30 S	3000	2100	3585	95
40 S	4000	2590	4545	95

**DUPLEX – 3,5/4,0 t ELECTRIC FORKLIFT (Two masts, Extended free lift)**

30 D	3000	2100	3630	1500
------	------	------	------	------

**TRIPLEX – 3,5/4,0 t ELECTRIC FORKLIFT (Three masts, Extended free lift)**

42 T	4200	2100	4920	1400
45 T	4500	2240	5240	1500
48 T	4800	2340	5540	1600
52 T	5200	2490	5970	1740
56 T	5600	2590	6320	1850
64 T	6400	2840	7100	2130

**SIMPLEX – 5,0 t ELECTRIC FORKLIFT (Two masts, Free lift)**

30 S	3000	2320	3815	60
40 S	4000	2820	4815	60

**DUPLEX – 5,0 t ELECTRIC FORKLIFT (Two masts, Extended free lift)**

30 D	3000	2290	3790	1500
------	------	------	------	------

**TRIPLEX – 5,0 t ELECTRIC FORKLIFT (Three masts, Extended free lift)**

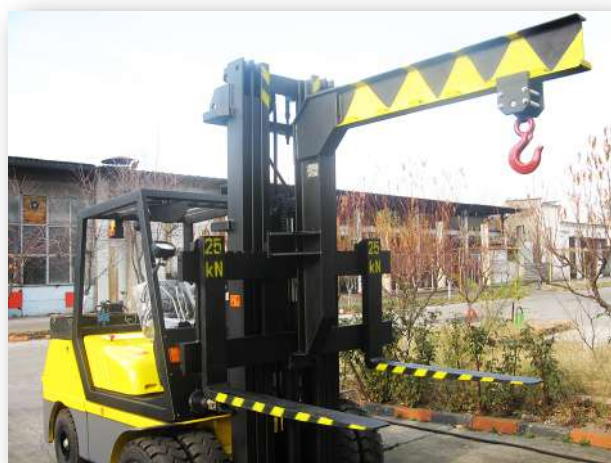
42 T	4200	2140	4950	1400
45 T	4500	2240	5250	1500
48 T	4800	2340	5550	1600
52 T	5200	2490	5970	1740
56 T	5600	2640	6350	1850
64 T	6400	2890	7150	2130



# WE SHARE YOUR IDEAS



THE WIDE VARIETY OF DIFFERENT  
TYPE OF ATTACHMENTS EXPANDS  
THE FUNCTIONALITY OF THE  
ELECTRIC FORKLIFTS



CE

<http://www.balkancar-record.com>



**balkancar**  
**RECORD**