



6,0 t
7,0 t
8,0 t

Ideas. Solutions.
For maximum maneuverability and energy efficiency.

ELECTRIC FORKLIFTS

RECORD
ER



RATED CAPACITY
6000-8000 kg

LOAD CENTER
600 mm

LIFTING HEIGHT
3300-4500 mm



THE BEST ELECTRIC FORKLIFTS FOR EVERY JOB ...

ERGONOMIC DESIGN THAT PROVIDES COMFORT

The electric forklifts produced by "Balkancar Record" JSC are designed in compliance with ergonomic considerations for work with less fatigue and meet all modern European safety regulations and environmental standards. The machines have an easily adjustable steering column, allowing the driver to choose the most comfortable position, guaranteeing reduced fatigue in long hours of work. The wide and flat floor and the low-lying, ergonomic pedals create comfort and increase the efficiency of the driver. The step is comfortable, non-slip and makes the getting in and getting off the machine safe and easy. A handle for convenience and security is also installed.



Ergonomic, adjustable seat

- Wide seating area;
- Position adjustment on the seat;
- Safety belt;
- Comfortable armrests;
- Change the slope of the backrest;
- Seat cushion adjustment.

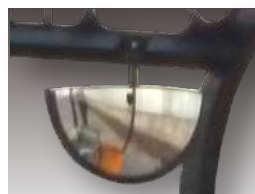
Movement, management and control

- Silent operation with AC traction and pump motors;
- Movement regulation;
- Smooth lifting and lowering of the load;
- Minimum energy consumption;
- Possibility for shifting the mode of the operation;
- Control of the modes;
- Battery status and working hours display;
- Quick and easy diagnostics of all systems;
- Adjustment of operating parameters depending on customer's needs;
- Multifunctional display;
- Service device / calibrator / for performing diagnostics and control.

Electric lighting, signalization, safety

- Designed for driving and working in unlit and closed premises;
- Audible alarm for reversing;
- Signal lamp - BLUE SPOT when reversing;
- Rotating warning light;
- Safety is ensured with a system that does not allow unpredictable driving without the driver sitting down at his seat.

Overview when maneuvering backwards



The panoramic mirror allows a wide angle of vision and ensures safety at work.

Comfort & Safety

Great visibility

The lifting equipment is constructed in a way that ensures great visibility while moving forwards and the top of the forks is always visible from the driver's seat. The size and arrangement of the dashboard and the placement of the controls on it is optimized.



Safe maneuvering when moving backwards

The counterweight is designed to improve visibility when moving backwards. The muffler is vertically positioned and with the correct orientation, which prevents hot air from blowing on operator while reversing. This improves driver comfort and prevents burns caused of exhaust gases.



COMFORT & SAFETY



Service maintenance

- The wide opening hood above the electronics ensures easy maintenance;
- 1000 hours between two consecutive technical maintenances;
- The used display gives the driver information for the upcoming technical maintenance;
- The the electric equipment is provided with diagnostic computer port;
- The combination of easy access and quality parts and components reduces maintenance time and increases productivity and reliability.

ECOLOGICAL COMPACT AND SILENT MAINTENANCE-FREE

Construction

The construction is characterized by simplicity, reliability and maneuverability. Modern electric forklift equipped with the latest electronic technology and with the ability to manipulate different kind of loads.

Braking system

Reliable braking is ensured with minimal effort, safely and ergonomically.

The electric forklift has two independent braking systems:

1. Service hydraulic brakes on the front wheels.
2. Mechanical or electrohydraulic manual - parking brake.

ELECTRIC MOTORS

Transmission

The produced electric forklifts have one AC or DC motor mounted on the drive axle or have two motors-reducers in combination with two AC motors.

The smooth, energy efficient and almost silent movement of the machine is ensured.

The transmission is designed for hard work and provides high performance.

Batteries

The main source of energy of the electric platforms are the lead-acid, gel and lithium-ion traction rechargeable batteries. Lithium-ion batteries are being used more and more every day.

Their advantages are:

- reduced losses and production risks;
- accelerated charging time;
- easy operation;
- energy savings up to 30%;
- safety and environmental protection
- lack of harmful fumes and toxic waste.

Advantages of AC technology

High frequency electronic control guarantees trouble-free operation and allows for recovery of energy restoring part of the capacity of battery during operation.

This is done in the following cases:

- When releasing the accelerator pedal;
- When descending a slope;
- When the brake pedal is pressed.

Controller

- Extremely energy efficient digital controller;
- Smooth, precise movement and lifting control;
- Programmable parameters for movement for the traction AC motor.

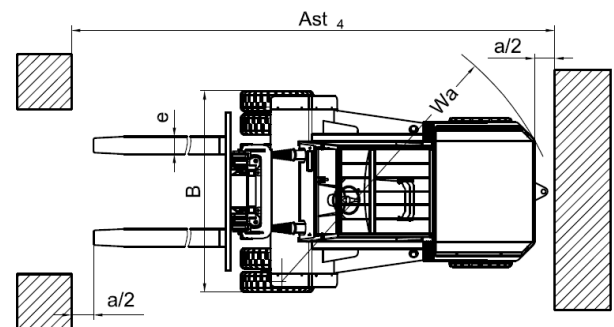
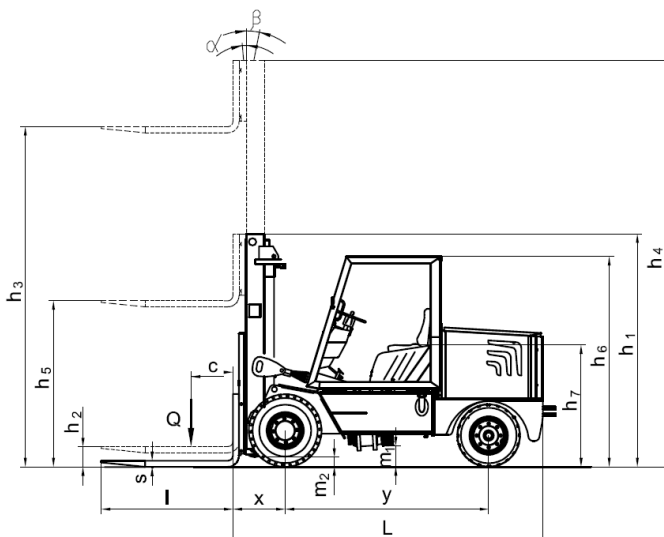


ELECTRIC FORKLIFTS

ER 60
ER 70
ER 80



ELECTRIC FORKLIFT		SPECIFICATION						
1	Manufacturer	BALKANCAR RECORD JSC						
2	Type	ELECTRIC FORKLIFT			ER 60 AC / ER 60	ER 70 AC / ER 70	ER 80 AC / ER 80	
3	Load capacity	Q		kg	6000	7000	8000	
4	Load center	C	Load center to fork face	mm	600			
5	Drive unit	Battery / diesel / LPG						
6	Type of operation	Pedestrian/Rider seated/Stand-on			Rider seated			
7	Overall dimensions	h_3	Lift height	mm	3300; 4000; 4500			
8		L_2	Length	mm	3300	3450		
9		B	Width	mm	2350			
10		h_1	Height, mast lowered		2677; 2960; 3210			
11		h_4	Height, mast extended		4377 ¹⁾ ; 5000 ¹⁾ ; 5500 ¹⁾			
12		h_6	Height of overhead guard	mm	2500			
13	Battery	Type			Panzer / Lithium-ion			
14		Напряжение / капацитет при 5 часа работа			V/Ah	80/700	80/800	80/960
15	Electric motors	Drive motor performance at $S_2 - 60$ min			kW	20 / 2x12 / 2x17		
16		Lift motor performance at $S_4 - 25\%$			kW	22 / 2x28		



1) Size h_4 does not include a load backrest. When a backrest is fitted add + 680 mm.

1. Forklifts in accordance with BDS ISO 3691-1.
2. Other variants of specifications and characteristics are possible.
3. Dimensions and parameters as shown are for reference only. They have been obtained under laboratory testing conditions. They could vary in accordance with the operation mode and the corresponding variants.
4. "Balkancar Record" JSC reserves the right to introduce changes to the specifications and products without notice.

WE SHARE YOUR IDEAS



**COMFORT
SAFETY
PRODUCTIVITY
ECOLOGICAL**

CE

<http://www.balkancar-record.com>



balkancar
RECORD 